

<http://news.buzzbuzzhome.com/2016/08/every-gta-condo-development-launching-fall-2016.html>



## Here is every GTA high-rise and mid-rise condo development launching in fall 2016

[Josh Sherman](#) Aug 29, 2016

Builders are gearing up for launches across the Greater Toronto Area this fall.

As scores of projects are set to hit the market in the coming months, BuzzBuzzNews has rounded up all the mid- and high-rise launches expected for fall 2016.

### 1. 8 Cumberland by Great Gulf and Phantom Developments



The 51-storey 8 Cumberland is bringing 414 units to the area just north of Yonge and Bloor Streets. Thanks to its central location, the project's address earns it a perfect Walk Score of 100 as the area is rich with amenities.

## 2. Museum FLTS by Castlepoint Numa and Numa Development Corporation



A key part in a plan to revitalize Sterling Road, a historically industrial strip in the city's west end, Museum FLTS will encompass 150 condo units across 10 storeys. A perforated, modular facade defines the structure that will join a nearby, restored Tower Automotive Building.

## 3. Canvas Condos by Marlin Spring Developments



Just west of Danforth and Main Avenues, the mid-rise, 166-unit Canvas Condos will bring classic brickwork with modern glass balconies and terraces to the evolving-but-already-vibrant Danforth Village community.

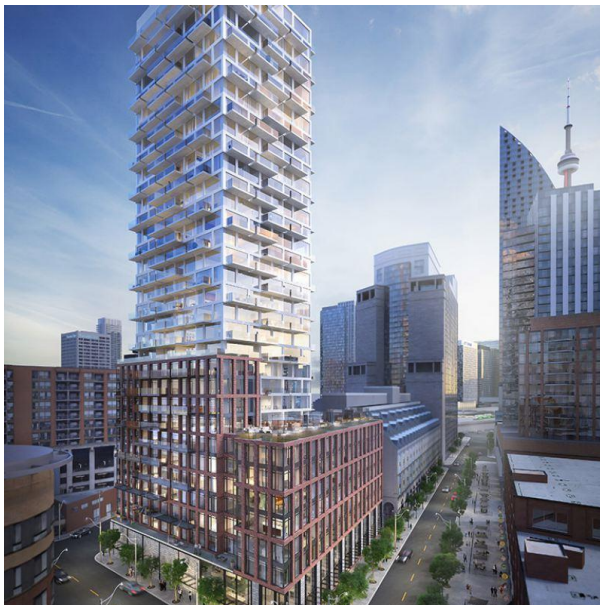


#### 4. The Kennedys (Phase 2) by Samm Developments



Following the launch of The Kennedys' first phase, another one is in the pipeline already. The first phase included two residential towers with 663 units, while the new phase will bring a third condo tower and revamp the Delta East Hotel, which currently occupies part of the site under development.

#### 5. 75 on the Esplanade by Carttera Private Equities and Harhay Developments



In Old Toronto, 75 on the Esplanade will put future residents close to the historic Distillery District, St. Lawrence Market, Union Station, the Entertainment District and much more. The 34-storey project offers a total of 350 units.

## 6. AYC Condos by Metropia



Short for Annex Yorkville Connection, AYC is sprouting between the two iconic Toronto neighbourhoods and is made up of a combination of 39 luxury townhomes and 245 upscale condo residences in a 27-storey tower on Bedford Road.

## 7. Sunday School Lofts by Grid Developments



This project blends modern lofts and heritage architecture. Much of the forthcoming structure — which has 32 residences — is new, but the design plays off of and incorporates the red-brick facade of the Temple Baptist Church at 14 Dewhurst Boulevard, just off Danforth Avenue.

## 8. Affinity Condominiums by Rosehaven Homes





At Plains Road East and Filmandale Road in Burlington, Rosehaven is introducing a pair of mid-rise condo buildings. Burlington is a lakeside city known for its outdoor amenities and natural green space, and Affinity fits right in — every unit will feature a balcony or terrace.

## 9. The Wyatt by The Daniels Corporation



The revitalization of Regent Park in downtown Toronto continues with The Wyatt, a 27-storey condo community. The Wyatt comes on the heels of considerable residential redevelopment and the completion of multiple amenities including the Regent Park Aquatic Centre and Regent Park Athletic Grounds.

10. The Park Club Condos by Elad Canada



The Park Club Condos, a 33-storey point tower, is Elad Canada's latest phase in its 20-acre master-planned Emerald City community in North York. It will contain 265 condo suites and a host of amenities such as a spa, gym and yoga room.

11. home (Power + Adelaide) by Great Gulf



By unit count, this 532-residence high-rise is the biggest high-rise launch anticipated for fall 2016. The 22-storey mixed-use tower from award-winning builder Great Gulf will have a six-storey podium with retail at street level.

12. [The Logan Residences](#) by [The Daniels Corporation](#)
13. [Avenue & Park Condos](#) by [Stafford Homes](#)
14. [Rodeo Drive Condos](#) by [Lanterra Developments](#)
15. [Avenue 151 Yorkville](#) by [Dash Developments Inc.](#)
16. Bayside Phase 3 by [Tridel](#) and [Hines](#)
17. [EV Royale](#) by [YYZed Project Management](#) and [Nurreal Capital](#)
18. [B-Line Condos](#) by [Royalpark Homes](#)
19. [Exchange Condos](#) by [Concord Adex](#)
20. [Cosmos III](#) by [Liberty Development Corporation](#)
21. [Halo Residences on Yonge](#) by [Cresford Development Corporation](#)
22. [The West Condominiums](#) by [Adi Development Group](#)